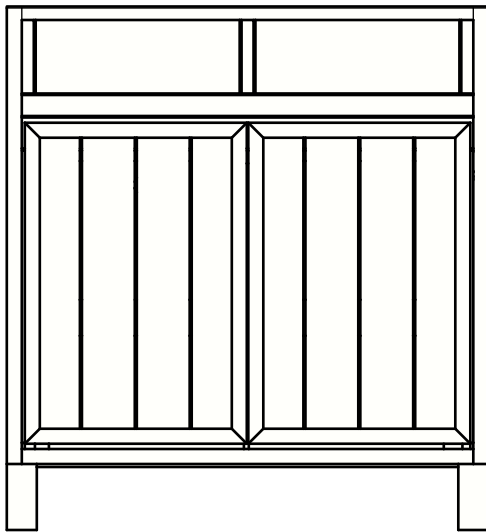
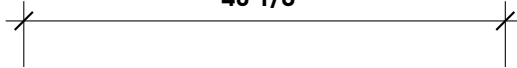


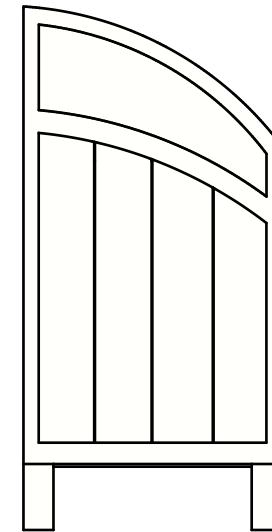
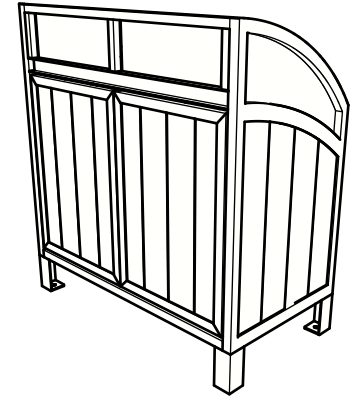
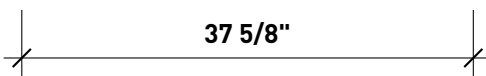
40 1/8"



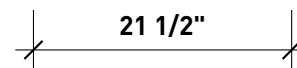
43 1/2"



37 5/8"



21 1/2"



Wishbone
site furnishings

WISHBONE SITE FURNISHINGS

210-27090 GLOUCESTER WAY LANGLEY, BC

DWG. TITLE: Modena Curved Top Double Recycling Station

REVISION: 01/01/20 R:00

MATERIAL:
ALUMINUM

DWG. NO.
DWSBGC01012000

DRAWN BY:
JAMES NEDEN

PATTERN NO.
N/A

MODEL NO.
MCTRS-39

SCALE:
1:16

SHEET:
1 OF 2

DATE:
01 JAN 20



WISHBONE SITE FURNISHINGS

210-27090 GLOUCESTER WAY LANGLEY, BC

DWG. TITLE: Modena Curved Top Double Recycling Station

REVISION: 01/01/20 R:00

MATERIAL:
ALUMINUM

DWG. NO.
DWSBGC01012000

DRAWN BY:
JAMES NEDEN

PATTERN NO.
N/A

MODEL NO.
MCTRS-39

SCALE:
AS SHOWN

SHEET:
2 OF 2

DATE:
01 JAN 20